

An aerial photograph of a city skyline at dusk. The central focus is a large, curved skyscraper with a distinctive spiral design and a tall, thin spire. The building's windows are illuminated, and its curved facade reflects the ambient light. Surrounding the main building are other urban structures, including a large stadium-like building to the right and various residential or commercial buildings to the left. The sky is a mix of blue and orange, indicating the time is either dawn or dusk. Faint white lines are overlaid on the image, suggesting architectural or design elements.

PREMIUMCOLLECTION



piva group
north america





Piva Group

A completely Italian story

Piva Group was set up in Italy in 1986 to manufacture insulation panels, doors and windows made of various combinations of materials, primarily aluminum and PVC for the building trade. The search for new techniques to develop innovative products has made the Piva brand known in Italy and internationally, especially in Spain, USA, Czech Republic, United Kingdom and Australia, countries where subsidiaries have been established in over the past 10 years.

Today, Piva is a prestigious name in the building industry, thanks to its production versatility, its product quality and its wealth of experience.

A company that is always ready to match its customers' needs, where Future is the watchword.



Headquarter

Roncanova di Gazzo V.se
VERONA - ITALY
Tel. +39 0442 536111
Fax +39 0442 536180
info@pivagroupspa.com
www.pivagroupspa.com

● Sales branches

Australia – Brisbane & Melbourne
Suriname – Paramaribo
Canada – Kamloops

● Production facilities

Verona – Italy
Salamanca – Spain
Ste. Genevieve – MO
Zlin – Czech Republic



Worldwide Italian Excellence

The Italian art of producing and customizing is expressed clearly and precisely in our products. Piva Group, within its sector, has combined tradition with innovation, the cornerstones of Worldwide Italian Excellence.

Our Italian products reflect the Italian know-how that distinguishes us on world markets and becomes a symbol of craftsmanship, creativity and quality.





Contents

Aluminum Windows & Doors

- 10 Venezia Line
- 12 Firenze Line
- 16 SlimPatio 68
- 22 Piva 66 TT

- 25 The Colour for your home design

- 26 Technical Section

Vinyl Windows & Doors

- 32 Metropolitan76 Series

- 40 An elegant choice of colors

- 42 Technical Section

Certification Quality Attestations

Certification guarantees that the requirements set by regulations and international standards regarding product conformity, services, processes and systems have been met.

PivaGroup products are designed to withstand the American climate. We comply with the market standards and are members of the **National Fenestration Rating Council (NFRC)**.



Aluminum

– Timeless durability

Aluminum is by far the youngest of the metals that are used industrially, as it was produced for the first time on a large industrial scale only just over 100 years ago. It is a chemical element with the atomic number 13 that is one of the most common elements in nature. It is the third most common element after oxygen and silicon. It is extracted from bauxite, which constitutes about 8% of the earth's surface and is distinguished by its softness and its lightness. Aluminum oxidises immediately on contact with the air to create a surface protection that makes it resistant to water and certain chemical substances. This characteristic makes it the metal that is most widely used by the transport, building and construction industries. Aluminum is 100% recyclable

any number of times without losing its original characteristics, which remain unchanged over time, even after numerous recycling phases, when the original aluminum is defined as "aluminum for recycling" or "secondary recycling". Excellent reflective properties, spreads and reflects light, reducing light dispersion from the light source and thus helping save energy.



ADVANTAGES



Design – three aesthetic variants:
FUNCTIONAL, RENAISSANCE, HIDDEN VENT



Thermal insulation – Uf value up to 1.20 W/
m²K in the HI+ version



Ventilation
– can be integrated with the Ventalis® unit



Burglar resistance – classes RC2 and RC3



Fire resistance
– classes EI 30, EI 45, EI 60, EW 30



Bullet resistance
– up to class FB6 (Kalashnikov)



Venezia Line

Windows, French doors,
entrance door with flush
leaf

The **Venezia aluminum system** has a 3-chamber thermal break and provides good thermal insulation, stability and security.

In order to adapt to any type of building, even to the most modern building trends, the **Venezia Line** is available in different designs with inward and outward opening.

The **Venezia system** can also be fitted with triple glazing up to 53 mm and an aeration unit to enable people to enjoy coolness without letting heat enter the living room. Also available in the HI version.



Architect: DMOA

To make the air circulate without opening the hinged windows completely, **tilt&turn** windows can be installed.

The Venezia Line can also be used with different levels of intrusion and burglary resistance (Classes 2/3), owing to the high level of security.

Unlimited design scope for light-filled and transparent architectural solutions.

Venezia Line doors and windows with a timeless design.



Architect: Johan Louagie

Firenze Line

Windows, French doors,
entrance door with overlap

The Firenze Line a Piva Group brand, is a system with high thermal insulation for creating **doors and windows opening inwardly and outwardly**, which combines elegance and comfort in a unique design.

The Firenze Line is available in several aesthetic variants, solutions for doors and windows that can be **equipped with double or triple glazing**, without affecting the system's ultra-slim design in any way.

Other properties of the range include high tightness to air, water and wind, ensuring high indoor comfort for your living room. The system's greater construction depth allows for installing a wider range of HR++ and HR+++ glass panels, resulting in a U_w value equal to $1.3 \text{ W/m}^2\text{K}$ or $U_w 1.0 \text{ W/m}^2\text{K}$.





ADVANTAGES



Design - ultra-slim look; several aesthetic variants: CLASSIC, CUBIC, FERRO



Thermal insulation -
Uf value up to 1.70 W/m²K



Burglar resistance - class RC2



Fire resistance - class EI30





THE ART OF LIVING
WITH SIMPLE AND CLEAN LINES





ADVANTAGES



Thermal insulation - U_w fino a $1.2W/m^2K$



Air permeability - Class 4



Watertightness - Classe 8A (450 Pa)



Resistance to wind load -
Class C5 (2000 Pa)



Anti-burglary protection - RC2





SlimPatio 68

Sliding system with slim profiles

Thanks to its extremely slim aluminium profiles, **SlimPatio 68** ensures an unhindered view of the outside from inside the home, combined with a high level of comfort.







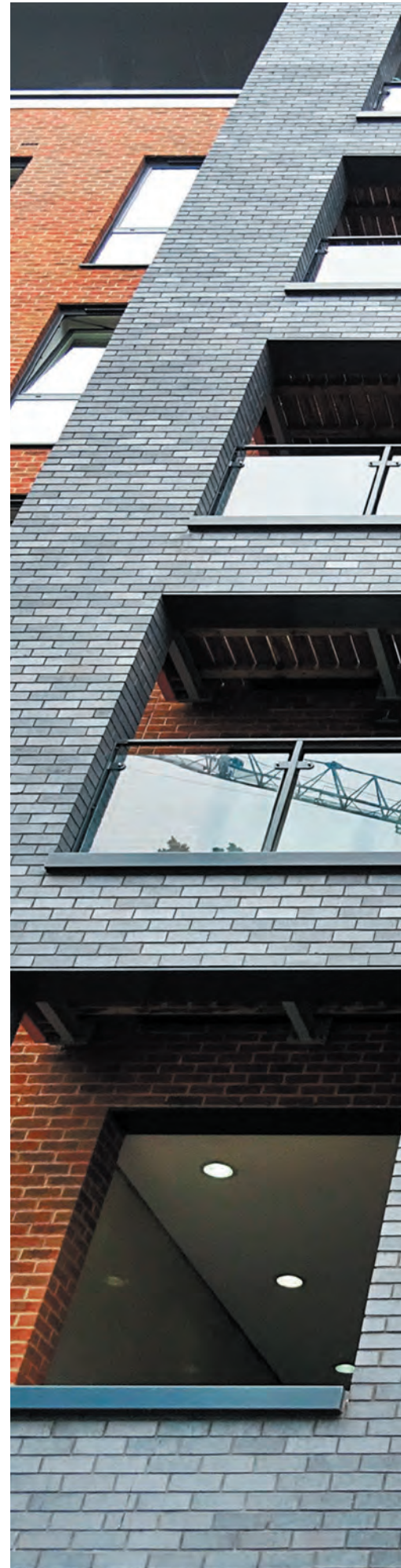
SlimPatio 68 differs from traditional sliding versions in that the profiles of the frame and central section are visually unobtrusive. As a result, the lower amount of visible aluminium means that natural illumination can be fully exploited inside the home while having an unhindered view of the outside.

The innovative technologies integrated into the system guarantee maximum performances in terms of resistance to wind, watertightness and thermal insulation, in line with the requirements of the most stringent international standards. SlimPatio 68 is the ideal solution for creating contemporary living spaces, thanks to its innovative minimalist design that allows for fully exploiting natural illumination without forgoing comfort.

Piva 66 TT

The aluminium system merging the industrial and modular sectors

The Piva 66 TT system is the evolution of thermal-break doors or windows applied to the commercial, light commercial and industrial building sectors. The strength of the Piva 66 TT system lies in its versatility, which makes it the perfect solution for all kinds of buildings. The Uf thermal transmittance values for the profiles of the new thermal-break range are among the lowest in the category. The Piva 66 TT thermal-break system can be used to build windows, French doors and doors. The range is completed by a sliding system. The system's robust structure makes it possible to build even large-size doors or windows. Piva 66 TT is available in RAL colours and wood-effect finishes.





ADVANTAGES



Thermal insulation – $U_f 1.6 \text{ W/m}^2\text{K}$



Air permeability – Class 4



Watertightness – Class E1500



Resistance to wind load – Class C5





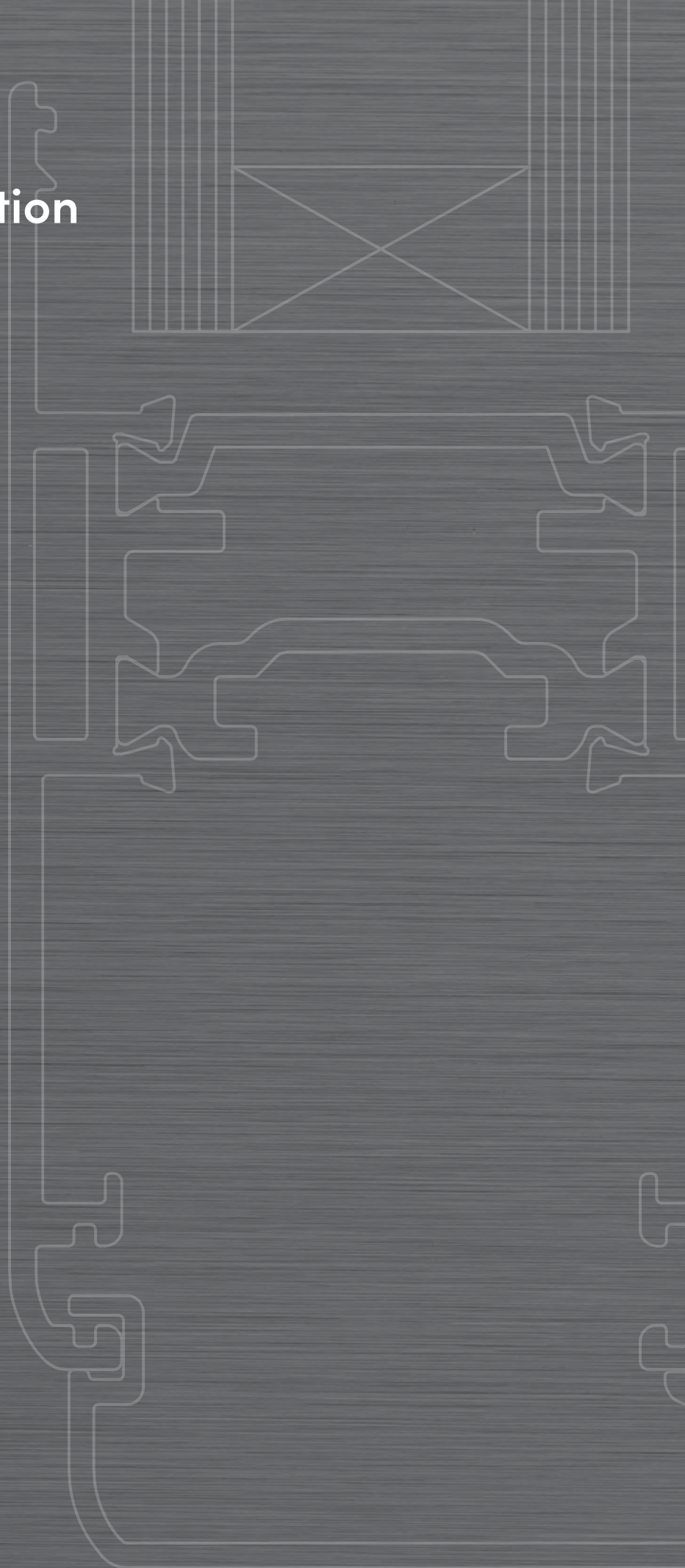
The colour for your home design

An infinite number of types of wood and finishes, colour schemes for your aesthetic needs, wood-effect colours, traditional varnishes and powder painting including two-tone versions, without neglecting the safety of a high-quality long-lasting product.

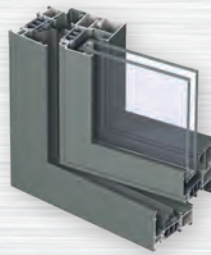
The vast range of finishes for the entire product range can enhance both contemporary and traditional living solutions.

The durability of our paintwork is guaranteed by **Qualicoat certification**.

Technical section



Aluminum



Venezia Line

Windows,
French doors



Venezia Line

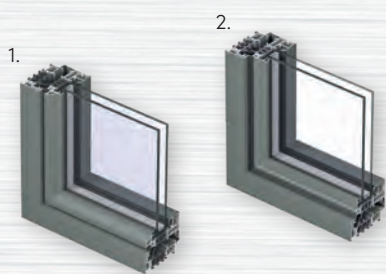
Entrance door with
flush leaf

Uf values in W (m²K)	Uf 1.7 W/m ² *K	Uf 2.5 W/m ² *K
Uw values	1.4 W/m ² *K (Ug 1.0 + W.E.) 1.1 W/m ² *K (Ug 0.6 + W.E.)	1.4 W/m ² *K with triple-glazing and WARM EDGE groove
Water tightness EN 1027; EN 12208	E900	7A
Wind resistance EN 12211; EN 12210	C5	C2
Air permeability EN 1026; EN 12207	4	4
Acoustic insulation EN ISO 140-3; EN ISO 717-1	Up to 42 dB	Up to 42 dB
Burglar resistance	RC2	RC2
Panel or sash/frame thickness Construction depth	Frame 68 mm Panel or sash 77 mm	Frame 68 mm Panel or sash 68 mm
Glass thickness	Up to 53 mm	Up to 52 mm
Possible panel or sash/frame combinations	-	-

F: Suitable for climate zone F

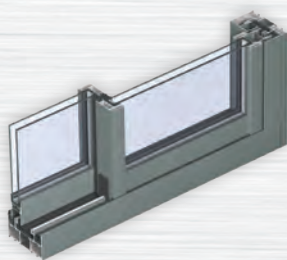
For the hinged system, the values were obtained on a sample door or window measuring 1230x1480

For the parallel sliding and lift&slide systems, the values were obtained on a sample door or window measuring 2500x2500



Firenze Line

Windows, French doors,
entrance door with overlap



SlimPatio 68

Sliding



Piva 66 TT

Windows, French doors
and doors

Uf 1.9 W/m ² *K	Uf 2.4 W/m ² *K	Uf 1.6 W/m ² K
1.3 W/m ² *K (Ug 1.0 + W.E.) 1.0 W/m ² *K (Ug 0.6 + W.E.)	Uw up to a 1.2 W/m ² K	Uw up to 1 W/m ² K
9A	8A (450 Pa)	E1500
C4	C5 (2000 Pa)	C5
4	4	4
Up to 45 dB	-	Up to 39 dB
RC2	RC2	-
Frame 76 mm Panel or sash 75/86 mm	Frame 120 mm Leaf 64 mm (two guides) Frame 176 mm (third guide)	-
Up to 55 mm	Up to 36 mm	-
1. Classic Panel/Sash Iron Frame 2. Cubic Panel/Sash Iron Frame	-	-



PVC – Long-lasting, resistant, maintenance free

Polyvinyl chloride, better known as PVC, is a **thermoplastic polymer of primarily natural origin, formed of 57% chlorine** from common salt, and **43% carbon and hydrogen** and other additives, such as stabilisers and lubricants, which give it the specific physical and mechanical properties it requires for its many uses.

PVC is one of the most widely used plastics in the world, due to its versatility; while it is rigid in the pure state, it can be mixed with plasticizers to make it flexible and easy to shape.

PVC is used in thousands of applications, from construction to food and pharmaceuticals packaging, from medical and surgical equipment to civil protection materials. Its widespread use is due to the fact that **PVC satisfies current energy saving and environmental standards.**

PVC has numerous **advantages**, offers high performance at low cost, is **insulating, stable, resistant and versatile**, fire resistant, **long-lasting**, hygienic and **recyclable**.

Its production uses very small amounts of non-renewable raw materials, and owing to its characteristics it is 100% recyclable.

Its many uses include that of manufacturing **profiles for doors and windows.**

Metropolitan76 Series

Doors and windows are not simply components, but important details which make a room special when the right combination of shape, colour and composition are chosen.

Metropolitan76 series doors and windows are characterised by an elegant, modern design which perfectly suits the modern lifestyle.

For those with an eye to design, **three different versions of the sash** or panel are available: Classic, Shaped and Minimal. **The Classic** design features a clean angular design that is perfectly suited to both classic and modern settings. **The Shaped** design features more rounded shapes that lend the product a timeless elegance. **The Minimal** design allows more light to enter the room, due to the minimal dimensions of the sash or panel, so that you can make the most of the light entering through the window. A linear and versatile profile suitable for any situation, from restoration to new buildings.

The Metropolitan76 range is composed of windows and French doors in fixed parallel, light and lifting versions.







ADVANTAGES



Design – modern



Thermal insulation – $U_f 1.1 \text{ W/m}^2\text{K}$



System with 3 seals



Standard Warm Edge groove



Can house glass panels up to 49 mm thick



Metropolitan⁷⁶

Windows, French doors,
entrance door, fixed,
parallel sliding system



Metropolitan76 is a system with three gaskets and an L-or Z-shaped six chamber frame with a thickness of 76 mm.

The new products come with standard additions such as the Warm Edge groove, layered glazing and metal fittings on the perimeter of the second sash or panel. On request, the products can be personalised with anti-intrusion metal fittings and glass panels with a **thickness of up to 49 mm.**



Metropolitan**76**
Essenziale
Windows, French doors



ADVANTAGES



Design - Reduced sash/panel for a minimalist look



Light - More space for the glass surface and thus more natural light entering the room



Thermal insulation - $U_f 1.1 \text{ W/m}^2\text{K}$



System with 3 seals



Standard Warm Edge groove



Can house glass panels up to 49 mm thick

All the technical characteristics of Metropolitan76, but with a minimal sash or panel design that offers a larger glazed surface and allows more natural light into your home.

The Metropolitan76 System also boasts outstanding thermal insulation and energy savings ratings, important for ensuring enhanced comfort.





**CHOOSE TO HAVE
ITALIAN DESIGN**



An Elegant choice of colors

From ancient times, colour has played a fundamental role in the life of man. History has always been rich in colours which, when used with skill, never fail to evoke unique, indescribable emotions and sensations.

Colours beautify, complete, outline, detail and highlight, and we offer a vast range of colours and finishes so that you can choose the look you desire for the perfect match of functional and personal architectonic styles.

Metropolitan⁷⁶ – Metropolitan⁷⁶ Essenziale

Batch-coloured Standard

654	607
Batch-coloured white	Batch-coloured ivory*

Standard film, 1 or 2 sides

064	0CQ	032	052
Ash White	Ivory Coated	Gold Oak	Gold Walnut

Standard Price Delivery not included in standard price

0WI	0IO	076	021	0SO
Winchester XA	Irishoak	Douglas	Grey	White Oak

Not included in standard price

0SC	AM	044	0RS	0SS	058	HB
Siena	Amaranth Oak Vlf	Marc Red	Ruby Red	Silicia Sftn Matt	Dark Green	Honey Oak Vlf
0EV	0MM	HO	0WX	0MP	0AU	0TG
Adria Green	Brass	Cream White	Veined White	Metbrush Platinum	Anthracite Grey	Fir Green
0BZ	0SF	0GD	0OB	0OS	0PG	094
S Bronze	Black Brown	Quarz Grau 7039	Sheffield Oak Brown	Sheffield Oak Grey	Pastel Green	Light Grey
WH						
Windsor 46857						

PVC



Metropolitan76



Metropolitan76
essenziale

Uf values in W (m²K)	Uf 1.1 W/m ² *K	Uf 1.1 W/m ² *K
Water-resistance class	9A	9A
Wind load resistance class	C1/B2	C1/B2
Air permeability class	4	4
Acoustic insulation	Up to 47 dB	Up to 47 dB
Security	STANDARD*	STANDARD*
Number of chambers	6	6
Frame profile	76 mm	76 mm
Maximum glass thickness	49 mm	49 mm

Types

Window	X	X
French door	X	X
Fixed	X	
Entrance doors	X	
Parallel sliding	X	
Lift&slide solution	X	

* two burglar-resistance points



Piva Group North America
5 Trautman Industrial Ct
Ste. Genevieve, MO 63670
Phone: 573-880-7133
Fax: 573-880-7126
www.pivawindowsna.com



Piva Group SpA
Via Roma, 139 - Roncanova di Gazzo V.se Verona - Italia
Phone: +39 0442 536111 (headquarter)
Phone: +39 0442 550911 (divisione PVC)
info@pivagroupspa.com - www.pivagroupspa.com

